

Modular Cooking Range Line EVO900 Full Module Electric Hob Cooking Top

ITEM # _____

MODEL # _____

NAME # _____

SIS # _____

AIA # _____



392047 (Z9HOEH4000) Full module electric hob with mild steel top

Short Form Specification

Item No. _____

Large cooking surface with 4 independently controlled cooking zones. Large flat cooking surface made of mild steel, permits the use of a number of various sized pots and pans, all easily movable across the surface without lifting. Exterior panels in stainless steel. Worktop in 20/10, stainless steel. Right angled side edges eliminate gaps and possible dirt traps between units.

Main Features

- 4 heating zones independently controlled.
- Hob top made of mild steel, smooth and easy to clean.
- Heating via armoured elements.
- Setting different temperature zones provides a temperature gradient over the plate for different cooking needs.
- Various sizes of pans can be used at the same time due to large surface area with no intermediate sectors.
- Pans can easily be moved from one area to another without lifting.
- All major compartments located in front of unit for ease of maintenance.
- The special design of the control knob system guarantees against water infiltration.
- Suitable for countertop installation.

Construction

- Unit is 930 mm deep to give a larger working surface area.
- All exterior panels in Stainless Steel with Scotch Brite finishing.
- Model has right-angled side edges to allow flush fitting joints between units, eliminating gaps and possible dirt traps.
- Unit is 900mm deep to give a larger working surface area.
- IPX5 water resistance certification.

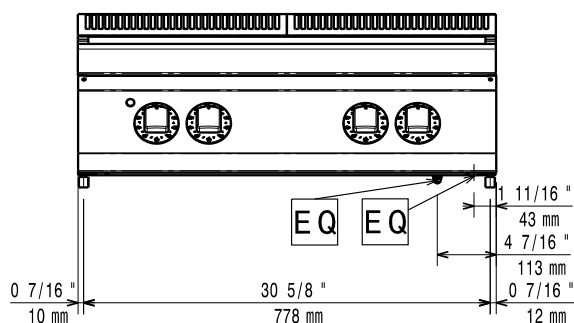
Optional Accessories

- Junction sealing kit PNC 206086 ☐
- Draught diverter, 150 mm diameter PNC 206132 ☐
- Matching ring for flue condenser, 150 mm diameter PNC 206133 ☐
- Side handrail for right/left hand PNC 206165 ☐
- Frontal handrail 800 mm PNC 206167 ☐
- Half module overshelf PNC 206183 ☐
- Full module overshelf PNC 206184 ☐
- Large handrail (portioning shelf) 400 mm PNC 206185 ☐
- Large handrail (portioning shelf) 800 mm PNC 206186 ☐
- Frontal handrail 1200 mm PNC 206191 ☐
- Frontal handrail 1600 mm PNC 206192 ☐
- Water column with swivel arm (water column extension not included) PNC 206289 ☐
- Water column extension PNC 206290 ☐
- 2 side covering panels, height 250 mm, depth 900 mm PNC 206321 ☐
- Base support for feet or wheels - 800mm (EVO700/900) PNC 206367 ☐

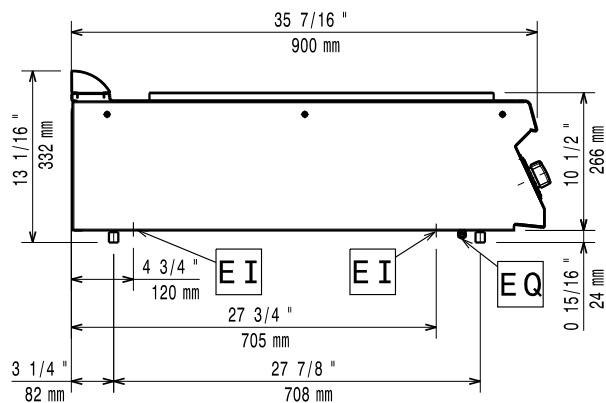
APPROVAL: _____

Modular Cooking Range Line EVO900 Full Module Electric Hob Cooking Top

Front

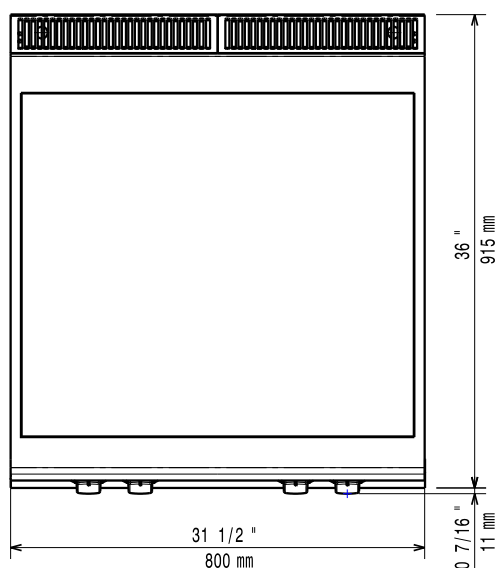


Side



EI = Electrical inlet (power)
EQ = Equipotential screw

Top



Electric

Supply voltage:	380-400 V/3N ph/50-60 Hz
Total Watts:	14 kW

Key Information:

External dimensions,
Width: 800 mm

**External dimensions,
Depth:** 900 mm

External dimensions, Height: 250 mm

Net weight: 105 kg

Shipping weight: 94 kg

Shipping height: 540 mm

Shipping width: 900 mm

Shipping depth: 1020 mm

Shipping volume: 0.5 m³

If appliance is set up or next to or against temperature sensitive furniture or similar, a safety gap of approximately 150 mm should be maintained or some form of heat insulation fitted.

Modular Cooking Range Line EVO900 Full Module Electric Hob Cooking Top

The company reserves the right to make modifications to the products without prior notice. All information correct at time of printing.